



Gismarvik CO₂ Hub

Et lokalt prosjekt med global klimaeffekt



CO2 konferansen 2025

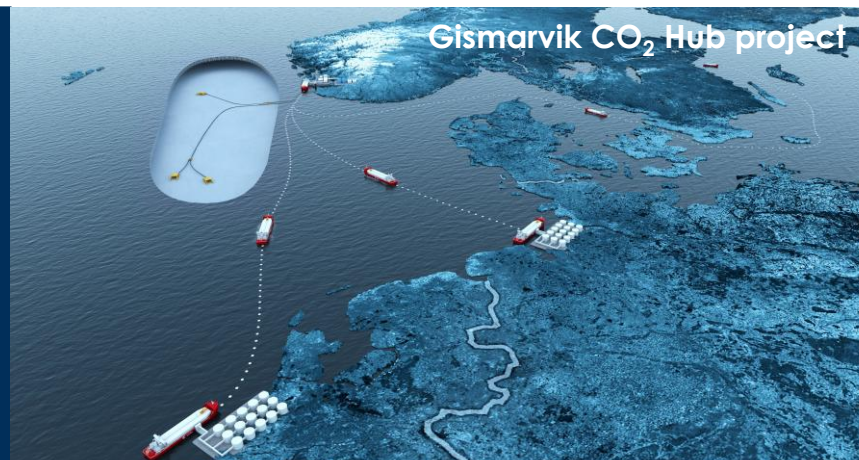
Lars Brenne, Technical Manager CCS, Horisont Energi

Horisont Energi is a Norwegian Clean Energy and Carbon Infrastructure and Storage Company



Founded in 2019 with head office in Sandnes, Norway

- Experienced and dedicated team
- A carbon infrastructure and storage company, and provider of clean ammonia, in partnership with major industrial leaders
 - Committed to accelerating the energy transition
 - Industrial ownership with E.ON as largest shareholder with 25% stake



Gismarvik CO₂ Hub

Local CO₂
customers

Direct shipping from
customer

Gismarvik CO₂ hub

Part of Nautilus CCS PMI 13.14

Shipping from
European export hub's

An infrastructure **enabling** the development of the CCS value chain:

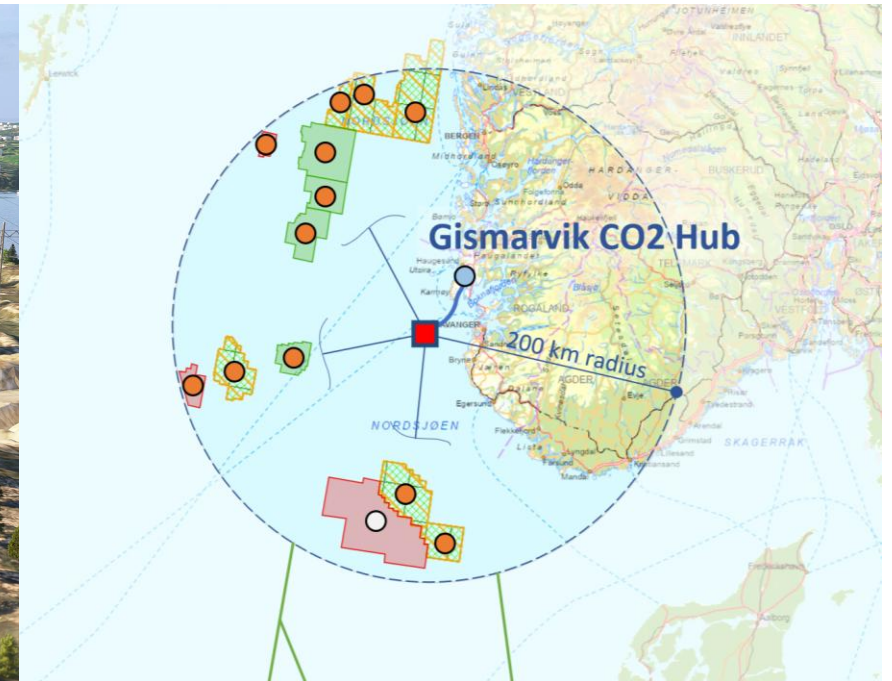
- Located at **Gismarvik**, Rogaland, and part of **Haugland Næringspark**
- Transport and storage of **local and regional** Norwegian CO₂ volumes
- **European CO₂** received and offloaded from ships

Gismarvik CO2 Hub facility



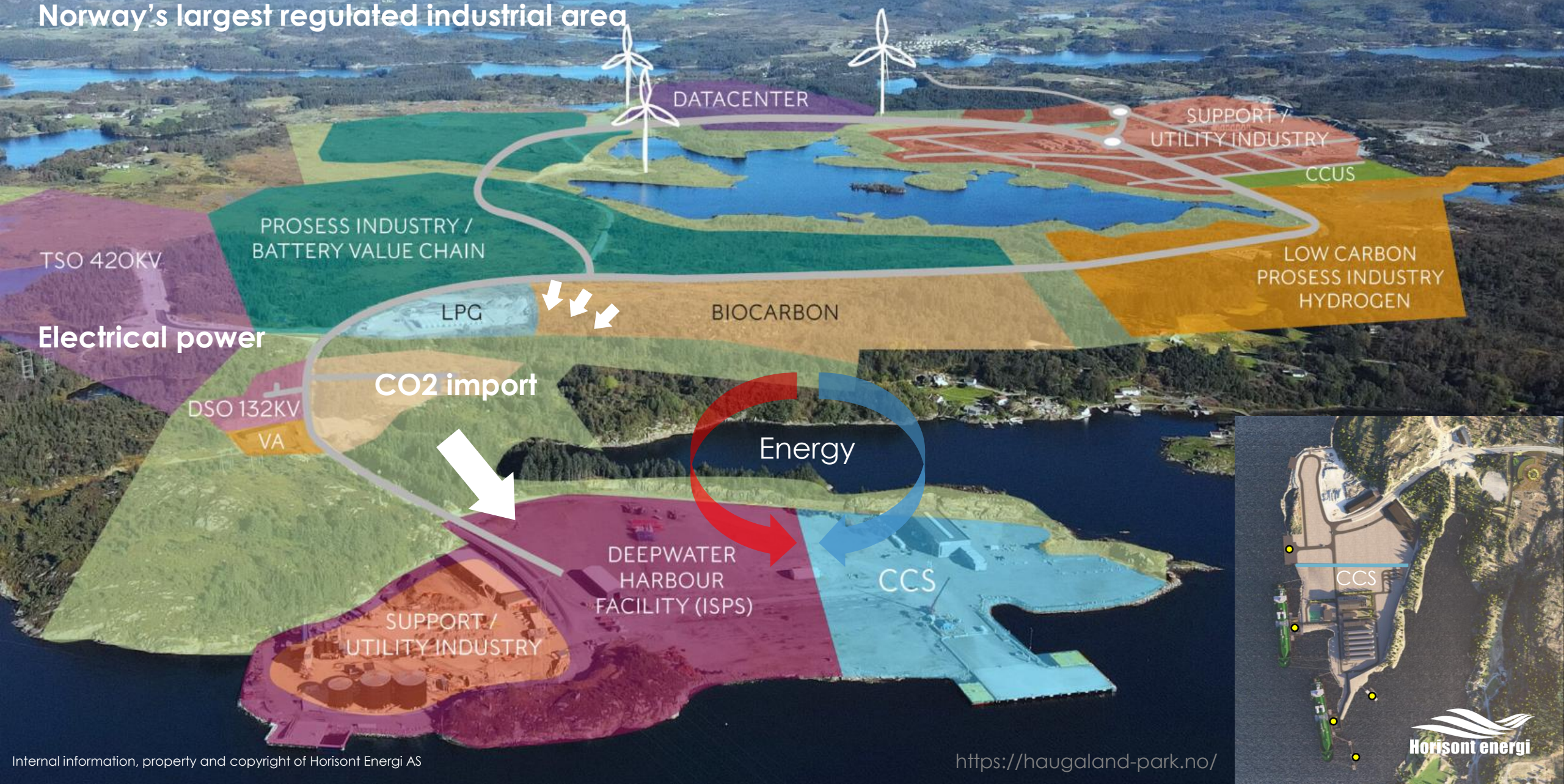
- One of Europe's largest CO₂ injection hubs with **24 MTPA** capacity
- **Innovative process** using known technology
- **Scalable** with the CCS value chain maturation

Gismarvik CO₂ Hub



- ✓ **Area solution**, in reach of several licences, optimised by industry cooperation
- ✓ An infrastructure designed for tie-in to **future CO₂ supply** pipelines (scaling, flexibility)
- ✓ **Low emission** and leading value chain **energy efficiency**
- ✓ **Enabler** for local industrial value creation and Norwegian CO₂ reductions

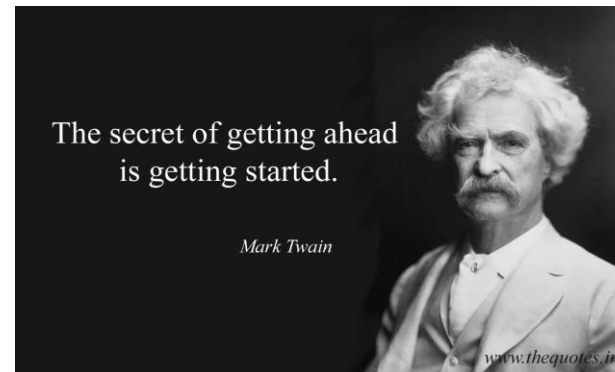
Norway's largest regulated industrial area



CCS value chain reflections



MAGE CREDIT: Google/worldatlas.com



A **new industry** is in the making, our **solutions** and decisions matters as they will shape the CCS value chain's **cost efficiency** and **sustainability** for the next **50 years**.

Technical design need to account for value chain needs such as: **scaling**, **phasing**, **flexibility** (CO₂ condition, composition), and give the ability to meet requirements arising as the value chain develops.

Horisont Energi: Ambition of **40 % reduction** of CO₂ emissions in Rogaland within 2030

Onshore infrastructure challenges:

- pre-investment for **scaling** and **sustainable** solution
- **schedule** readiness for GCO2H

Value chain parameters assessed for infrastructure CO₂ transport solutions:

- Energy consumption
- Emissions
- Scaling
- Safety

Infrastructure studies emitters

Enova funding: Truck offloading

Climit: Small CO₂ Hub
Truck offloading/small ships



Offshore subsea pipelines

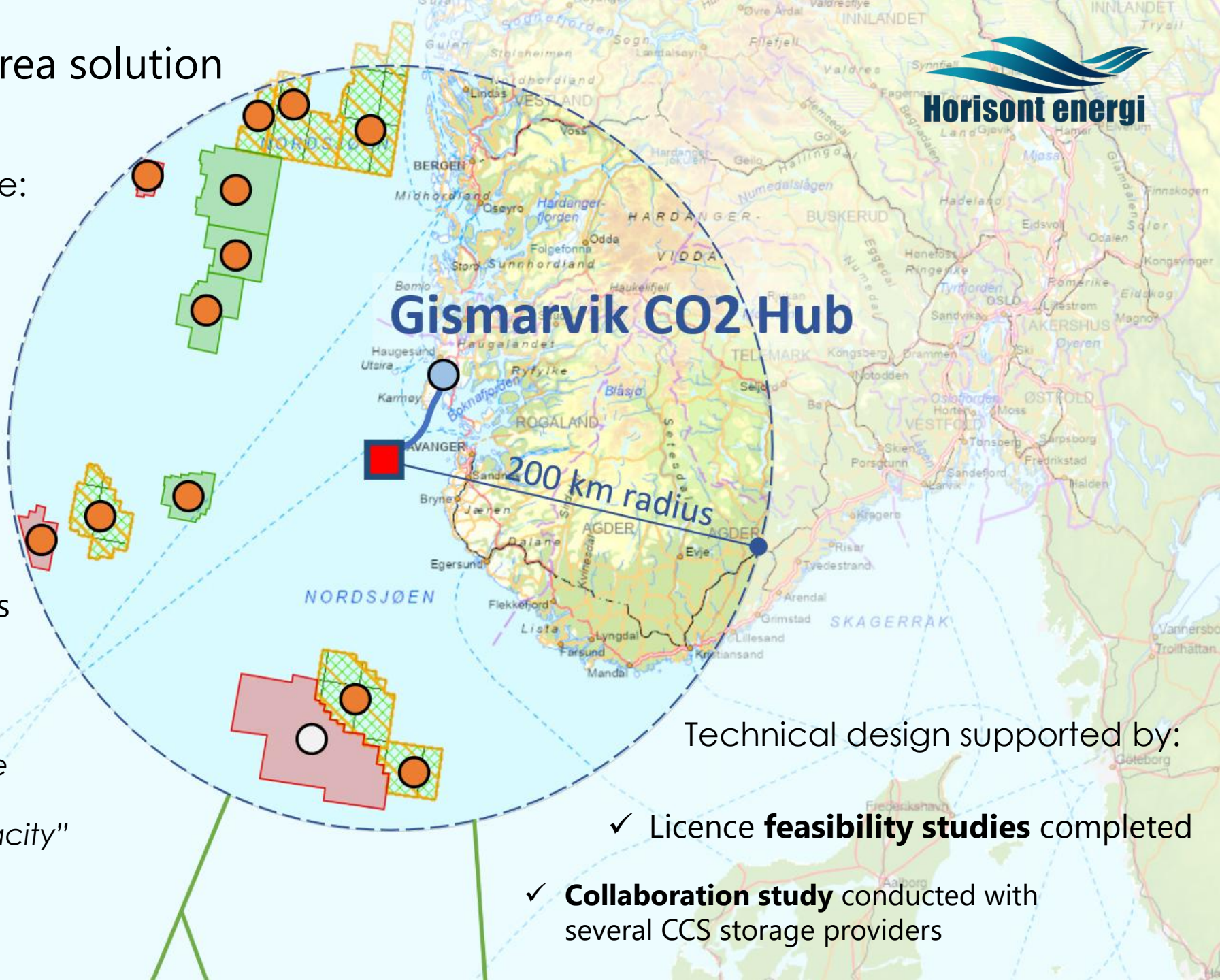
Gismarvik CO₂ Hub – an area solution



Concept developed to provide:

- Basis for **collaboration**
- **Reduce** value chain **risk**, complete value chain
- Create **synergies** and provide efficient **scaling** of capacity
- Solution for connecting multiple CO₂ storage reservoirs

“How to establish the CCS value chain by securing sufficient infrastructure and storage capacity”



Technical design supported by:

- ✓ Licence **feasibility studies** completed
- ✓ **Collaboration study** conducted with several CCS storage providers



Gismarvik CO₂ Hub

One of Europe's largest CO₂ injection hub's with 24 MTPA capacity

Et lokalt prosjekt med global klimaeffekt

NORTH SEA | EST. START Q4 2029



Project highlights

- **Mature project** with significant activity level since 2021
- Key part of a **European CCS value chain**
- Part of EU list of **Project of Mutual Interest (PMI)**
- Offer a **leading value chain energy efficiency**
- **Cost competitive** building block in the CCS value chain
- **Economy of scale** gives a competitive advantage and lower cost
- **Dependable** with robust operations and known technology
- Enables **local value creation** and CO₂ value chains
- Enabling up to **40% CO₂ reductions in Rogaland**

Gismarvik CO₂ Hub

A local solution with global impact

Thank You!

Lars Brenne
Technical Manager GCO2H
LB@horisontenergi.com